



**GLOBAL FIX**  
Furniture Accessories

[www.global-fix.com](http://www.global-fix.com)



It is a company consisting of a combination of Professional, Experienced, and visionary people in the regional and international markets within the sector for many years.

With our knowledge, trained and experienced human resources, we are confident in the future as a company that always wants excellence.

Our aim is to provide the highest quality products without compromising honesty with all our capabilities existing on regional and international platforms, to benefit from all the opportunities of innovative, modern and technology and to serve our valuable business partners.

To provide an efficient, modern and peaceful working environment with a fair management approach that respects people and the environment, thinks scientifically and creatively.

To fulfill the requirements of private and moral rules, laws, regulations and agreed customer requirements in our working life.

To be the first choice for our esteemed business partners by producing products that can meet the expectations of our industry and our customers with minimum cost and maximum efficiency and with a stable quality and price policy.

Open to all kinds of suggestions from you, we also look warmly at special productions in accordance with your demands and aim to go further with the power that you will give.

“It's better to be unique than perfect”

<p><b>SCREWS</b></p>			
	<p><b>MITER</b></p>	<p><b>MSFIX BOLTS</b></p>	
			
<p><b>METRIC SCREW</b></p>			
	<p><b>KABINET SCREW</b></p>		
			

## CHIPBOARD SCREWS

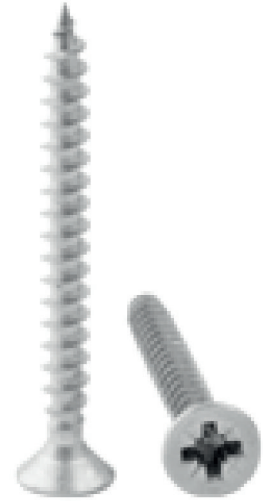
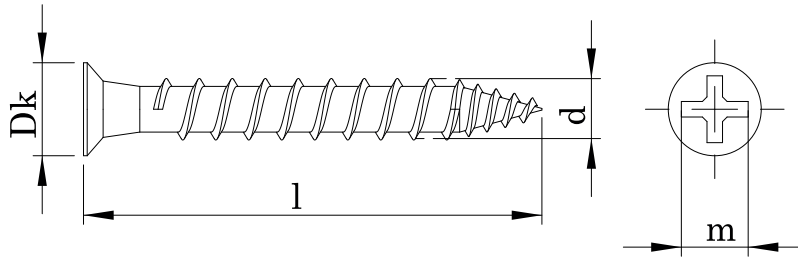
CODE	DIMENSIONS	BOX	PIECE
3001	3.0x16 mm	1000	24000
3002	3.0x18 mm	1000	24000
3003	3.0x20 mm	1000	24000
3004	3.0x25 mm	1000	12000
3005	3.0x30 mm	1000	12000
3006	3.5x16 mm	1000	24000
3007	3.5x18 mm	1000	24000
3008	3.5x20 mm	1000	24000
3009	3.5x25 mm	1000	12000
3010	3.5x30 mm	1000	12000
3011	3.5x35 mm	1000	12000
3012	3.5x40 mm	500	8000
3013	3.5x45 mm	500	8000
3014	3.5x50 mm	500	8000
3015	4.0x16 mm	1000	24000
3016	4.0x18 mm	1000	12000
3017	4.0x20 mm	1000	12000
3018	4.0x25 mm	1000	12000
3019	4.0x30 mm	1000	16000
3020	4.0x35 mm	1000	16000
3021	4.0x40 mm	500	8000
3022	4.0x45 mm	1000	8000
3023	4.0x50 mm	500	8000
3024	4.0x60 mm	400	6400
3025	4.5x25 mm	1000	12000
3026	4.5x30 mm	500	8000
3027	4.5x35 mm	500	8000
3028	4.5x40 mm	500	8000
3029	4.5x45 mm	400	6400
3030	4.5x50 mm	400	6400
3031	4.5x60 mm	300	4800
3032	5.0x20 mm	1000	16000
3033	5.0x25 mm	500	6000
3034	5.0x30 mm	500	8000
3035	5.0x35 mm	500	8000
3036	5.0x40 mm	500	8000
3037	5.0x45 mm	400	6400
3038	5.0x50 mm	400	6400
3039	5.0x60 mm	300	4800
3040	5.0x70 mm	200	3200
3041	5.0x80 mm	300	1800
3042	6.0x50 mm	500	3000
3043	6.0x60 mm	400	2400
3044	6.0x70 mm	300	1800
3045	6.0x80 mm	250	1500
3046	6.0x100 mm	200	1200
3047	3.5x25 mm	1000	12000

YSB Backrest Screw



## CHIPBOARD SCREWS | DIN 7505

CHIPBOARD SCREW SPANPLATTENSCHRAUBE

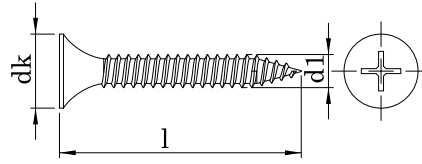


### Technical Informations

Thread Size (d)		3	3.5	4	4.5	5	6
Major Dia (dk)	min.	3.00	3.30	3.75	4.25	4.30	5.25
	max.	3.20	3.50	4.00	4.50	5.00	6.00
Head Dia (d)	min.	6.00	6.64	7.64	7.64	10.05	12.05
	max.	6.30	7.00	8.00	8.00	9.64	11.57
Pz (m)	min.	1.00	2.00	2.00	2.00	2.00	3.00
Material		C1018-C1022					
Drill Range		0.05-0.18 mm.		0.10-0.23 mm.		0.10-0.28 mm.	

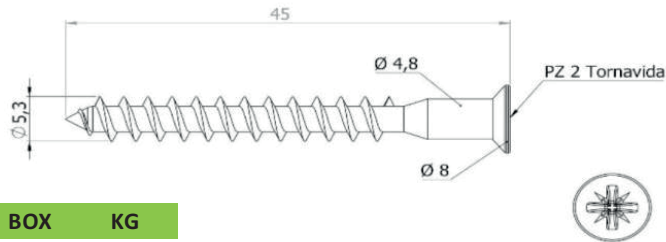
Thread Size (d)			3	3.5	4	4.5	5	6
Length (l)	min.	max.	Weight (p)					
13	12.10	13.90	0.39	0.64				
16	15.10	16.90	0.53	0.71	0.96			
18	17.10	18.90		0.77	1.18			
20	19.00	21.00	0.70	0.83	1.51			
25	24.00	26.00	0.79	1.04	1.62	1.88		
30	28.75	31.25	0.88	1.28	1.93	2.20	2.80	
40	38.75	41.25	1.10	1.42	2.20	2.80	3.45	
45	43.75	46.25		1.65	2.40	3.03	3.78	
50	48.50	51.50		1.88	2.72	3.15	3.90	6.44
60	58.50	61.50		2.00	3.24	3.27	4.78	7.47
70	68.00	72.00			3.75		5.47	8.73
80	78.00	82.00					6.16	10.40
90	88.00	92.00					6.85	11.45
100	98.00	102.00					7.54	12.50
120	117.50	122.50						14.64
150	147.50	152.50						18.92

**DRYWALL SCREW PH Z2**



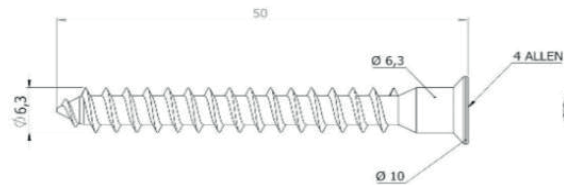
CODE	DIMENSIONS	COLOUR	BOX	PIECE
3101	3.5x25 mm	Black	1000	12000
3102	3.5x35 mm	Black	1000	12000

**CABINET SCREW 5 mm Series**



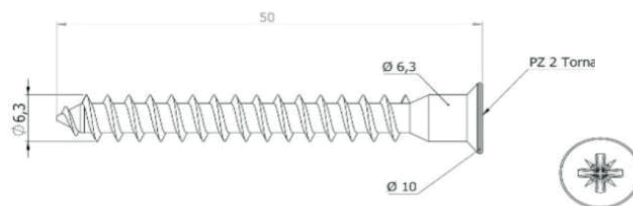
CODE	DIMENSIONS	COLOUR	BOX	KG
3103	∅ 5.3x45 mm / Star Pointed	Zinc	2000	12 Kg.
3104	∅ 5.3x50 mm / Star Pointed	Zinc	2000	12 Kg.

**ALLEN CABINET SCREW 6 mm Series**



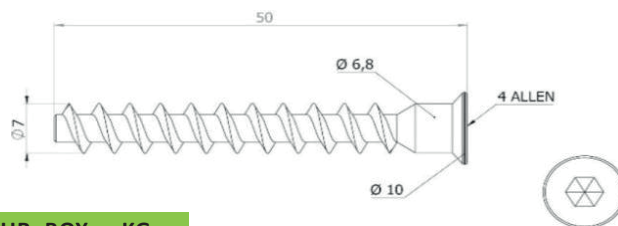
CODE	DIMENSIONS	COLOUR	BOX	KG
3105	∅ 6.3x50 mm / 4 mm Allen Pointed	Zinc	2000	14 Kg.
3106	∅ 6.3x50 mm / 4 mm Allen Blunt	Zinc	2000	14 Kg.
3107	∅ 6.3x70 mm / 4 mm Allen Pointed	Zinc	1000	14 Kg.

**CABINET SCREW 6 mm Series**



CODE	DIMENSIONS	COLOUR	BOX	KG
3108	∅ 6.3x50 mm / 2PZ Pointed	Zinc	2000	14 Kg.
3109	∅ 6.3x50 mm / 2PZ Star Blunt	Zinc	2000	14 Kg.

**CABINET SCREW 7 mm Series**



CODE	DIMENSIONS	COLOUR	BOX	KG
3110	∅ 7.0x50 mm / 4 mm Allen Blunt	Zinc	1000	7 Kg.
3111	∅ 7.0x50 mm / 3PZ Star Blunt	Zinc	1000	7 Kg.

**CROSS RECESSED OVAL HEAD METRIC SCREWS**

**YMB / DIN 966**

CODE	M	K	D	D1	COLOUR
3112	M3	2.4	2.98	5.9	Zinc
3113	M3.5	2.7	3.47	6.8	Zinc
3114	M4	3.1	3.97	7.8	Zinc
3115	M5	3.8	4.97	9.8	Zinc
3116	M6	4.6	5.97	11.8	Zinc

**L**

10 12 16 20 25 30 35 40 45 50



**CROSS RECESSED PAN HEAD METRIC SCREWS**

**YSB / DIN 7985**

CODE	M	K	D	D1	COLOUR
3117	M3	1.65	2.98	5.50	Zinc
3118	M3.5	1.93	3.47	6.30	Zinc
3119	M4	2.20	3.97	7.30	Zinc
3120	M5	2.50	4.97	9.00	Zinc
3121	M6	3.00	5.97	10.70	Zinc

**L**

10 12 16 20 25 30 35 40 45 50



**CROSS RECESSED COUNTERSUNK HEAD METRIC SCREWS**

**YHB / DIN 965**

CODE	M	K	D	D1	COLOUR
3122	M3	1.65	3.00	5.45	Zinc
3123	M3.5	1.93	3.47	6.40	Zinc
3124	M4	2.20	3.97	7.35	Zinc
3125	M5	2.50	4.97	9.00	Zinc
3126	M6	3.00	5.97	10.80	Zinc

**L**

10 12 16 20 25 30 35 40 45 50



## METAL DOWEL MSFIX SET

CODE	NAME	COLOUR	BOX	KG
3201-01	12 mm (16 mm chipboard)	Zinc	2000	23.50
3201-02	12 mm (16 mm chipboard)	Nickel	2000	23.50
3202-01	13 mm (18 mm chipboard)	Zinc	2000	24.50
3202-02	13 mm (18 mm chipboard)	Nickel	2000	24.50



## PLASTIC DOWEL MSFIX SET

CODE	NAME	COLOUR	BOX	KG
3203-01	12 mm (16 mm chipboard)	Zinc	2000	23.50
3203-02	12 mm (16 mm chipboard)	Nickel	2000	23.50
3204-01	13 mm (18 mm chipboard)	Zinc	2000	24.50
3204-02	13 mm (18 mm chipboard)	Nickel	2000	24.50



\*Specify plastic dowels in tool orders.

## RAW BOLT MSFIX SET

CODE	NAME	COLOUR	BOX	KG
3205-01	12 mm 8 lik (16 mm chipboard)	Zinc	2000	23.50
3205-02	12 mm 10 luk (16 mm chipboard)	Nickel	2000	23.50
3206-01	13 mm 8 lik (18 mm chipboard)	Zinc	2000	24.50
3206-02	13 mm 10 luk (18 mm chipboard)	Nickel	2000	24.50



## MSFIX BOLT (CHIPBOARD THREAD) SET

CODE	NAME	COLOUR	BOX	KG
3207-01	12 mm (16 mm chipboard)	Zinc	2000	21
3207-02	12 mm (16 mm chipboard)	Nickel	2000	21
3208-01	13 mm (18 mm chipboard)	Zinc	2000	22
3208-02	13 mm (18 mm chipboard)	Nickel	2000	22



## MSFIX HEAD (16 mm chipboard)

CODE	NAME	COLOUR	BOX	KG
3209-01	12 lik Msfix Head	Zinc	2000	7
3209-02	12 lik Msfix Head	Nickel	2000	7



## MSFIX HEAD (18 mm chipboard)

CODE	NAME	COLOUR	BOX	KG
3210-01	13 lük Msfix Head	Zinc	2000	8
3210-02	13 lük Msfix Head	Nickel	2000	8





## M6 MSFIX BOLTS (METRIC)

CODE	NAME	COLOUR	BOX	KG
3211-01	M6/34 mm Msfix Bolt - Single Washer	Zinc	2000	14
3211-02	M6/24 mm Msfix Bolt - Single Washer	Zinc	2000	14
3211-03	M6/28 mm Msfix Bolt - Single Washer	Zinc	2000	14
3211-04	M6/34 mm Msfix Bolt - Dual Washer	Zinc	2000	14
3211-05	M6/24 mm Msfix Bolt - Dual Washer	Zinc	2000	14
3211-06	M6/28 mm Msfix Bolt - Dual Washer	Zinc	2000	14

\* Not: Specify Diamond Design / Helix Design in your orders.



## MSFIX BOLTS (CHIPBOARD THREAD)

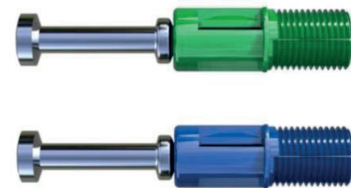
CODE	NAME	COLOUR	BOX	KG
3212-01	M6/34 mm Msfix Bolt - Single Washer	Zinc	2000	14
3212-02	M6/24 mm Msfix Bolt - Single Washer	Zinc	2000	14
3212-03	M6/28 mm Msfix Bolt - Single Washer	Zinc	2000	14
3212-04	M6/34 mm Msfix Bolt - Dual Washer	Zinc	2000	14
3212-05	M6/24 mm Msfix Bolt - Dual Washer	Zinc	2000	14
3212-06	M6/28 mm Msfix Bolt - Dual Washer	Zinc	2000	14

\* Not: Specify Diamond Design / Helix Design in your orders.



## BOLT SET (CHIPBOARD THREAD)

CODE	NAME	COLOUR	BOX	KG
3213	Ø8/34 mm Msfix Bolt (Blue)	Zinc	2000	9
3214	Ø10/34 mm Msfix Bolt (Green)	Zinc	2000	9



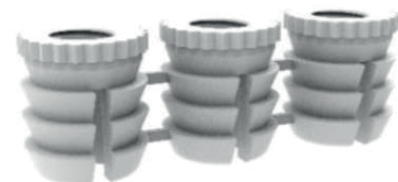
## METAL DOWEL

CODE	NAME	COLOUR	BOX	KG
3215	M6 x Ø8 x 8 mm Metal Dowel	Zinc	1000	2.30
3216	M6 x Ø8 x 10 mm Metal Dowel	Zinc	1000	2.30
3217	M6 x Ø8 x 13 mm Metal Dowel	Zinc	1000	2.30
3218	M6 x Ø8 x 13 mm Metal Dowel (euro)	Zinc	1000	2.30
3219	M6 x Ø8 x 16 mm Metal Dowel	Zinc	1000	2.30
3220	M8 x Ø10 x 12 mm Metal Dowel	Zinc	1000	2.30
3221	M8 x Ø10 x 15 mm Metal Dowel	Zinc	1000	2.30
3222	M8 x Ø10 x 18 mm Metal Dowel	Zinc	1000	2.30
3223	M10 x Ø13 x 15 mm Metal Dowel	Zinc	1000	2.30



## PLASTIC RIBBON DOWEL

CODE	NAME	COLOUR	BOX	KG
3224	M6 - Ø10 x 11 mm Plastic Dowel	Natural	10.000	8
3225	M6 - Ø10 x 13 mm Plastic Dowel	Natural	5.000	8
3226	M6 - Ø8 x 11 mm Plastic Dowel	Natural	5.000	8
3227	M5 - Ø5 x 9 mm Plastic Dowel	Natural	10.000	8
3228	M5 - Ø5 x 13 mm Plastic Dowel	Natural	5.000	8



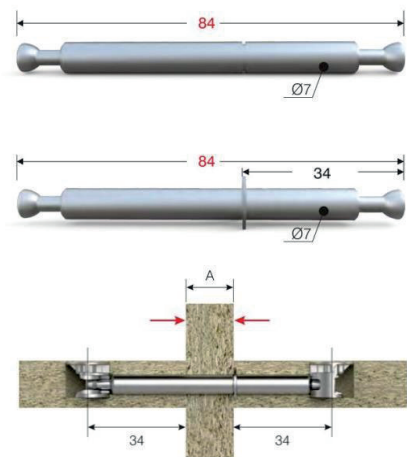
## AUTOMAT MSFIX BOLT

CODE	NAME	COLOUR	BOX	KG
3229	M6 x 34 mm Bolt	Zinc	1000	17



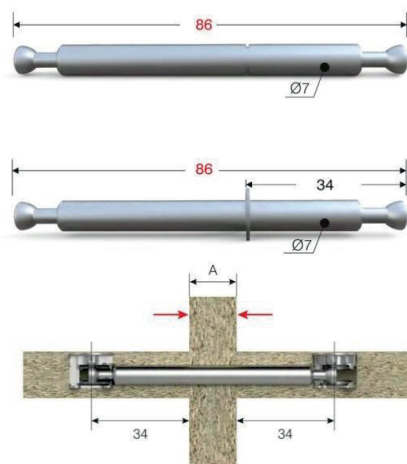
## DOUBLE SIDE MSFIX BOLT

CODE	NAME	COLOUR	BOX	KG
3230	7x84 mm Bolt without washer	Zinc	1000	17
3231	7x84 mm Bolt with washer	Zinc	1000	17



## DOUBLE SIDE MSFIX BOLT

CODE	NAME	COLOUR	BOX	KG
3232	7x86 mm Bolt without washer	Zinc	1000	17
3233	7x86 mm Bolt with washer	Zinc	1000	17



## ONE-SIDED INSTALLATION MSFIX BOLT

CODE	NAME	COLOUR	BOX	KG
3234	Ø 7 x 43.5 X 13 Bolt	Zinc	1000	17



## HANDLE SCREWS

CODE	NAME	COLOUR	BOX	KG
3251	M4 x 22 mm	Zinc	5000	11
3252	M4 x 25 mm	Zinc	5000	14
3253	M4 x 35 mm	Zinc	3000	11
3254	M4 x 40 mm	Zinc	3000	11
3255	M4 x 25 mm (Chipboard Thread)	Zinc	3000	11
3256	M4 x 45 mm (Chipboard Thread)	Zinc	3000	11



## RAIL SCREWS (for hole countersunk)

CODE	NAME	COLOUR	BOX	KG
3257	6.3 x 9.5 mm	Zinc	10.000	17
3258	6.3 x 9.5 mm	Nickel	10.000	17
3259	6.3 x 13 mm	Zinc	10.000	20
3260	6.3 x 13 mm	Nickel	10.000	20



## BUILT-IN SHELF PIN

CODE	NAME	COLOUR	BOX	KG
3261	Raffix Screw M6	Pls. Colour	5000	16
3262	Raffix Screw 6.3 x 7.5 mm	Pls. Colour	5000	18
3263	Raffix Screw 6.3 x 12 mm	Pls. Colour	5000	18



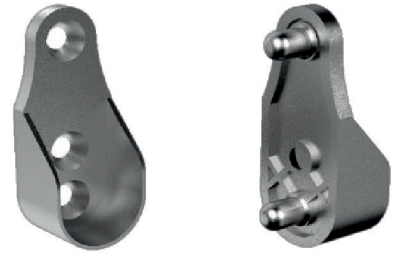
## LOCKED RAFFIX

CODE	NAME	COLOUR	BOX	KG
3264	Raffix Screw M6	Zinc	100	2
3265	Raffix Screw 6.3 x 7.5 mm	Zinc	100	2
3266	Raffix Screw 6.3 x 11 mm	Zinc	100	2



## OVAL FLANGE (15x30)

CODE	NAME	COLOUR	BOX	KG
3301-01	OVAL FLANGE flat	Zinc	1000	7
3301-02	OVAL FLANGE flat	Nickel	1000	7
3302-01	OVAL FLANGE pin	Zinc	1000	8
3302-02	OVAL FLANGE pin	Nickel	1000	8



## OVAL FLANGE (15x30)

CODE	NAME	COLOUR	BOX	KG
3303-01	OVAL FLANGE flat	Zinc	1000	7
3303-02	OVAL FLANGE flat	Nickel	1000	7
3304-01	OVAL FLANGE pin	Zinc	1000	8
3304-02	OVAL FLANGE pin	Nickel	1000	8



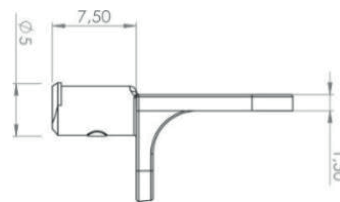
## PLS. OVAL FLANGE

CODE	NAME	COLOUR	BOX	KG
3305	Oval Flange Flat	Plas. Colour	1000	2



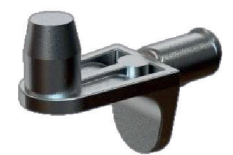
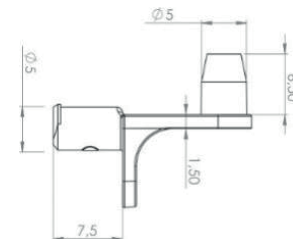
## METAL SHELF SUPPORT PIN FLAT

CODE	NAME	COLOUR	BOX	KG
3306	Metal shelf Pin Flat	Nickel	1000	2



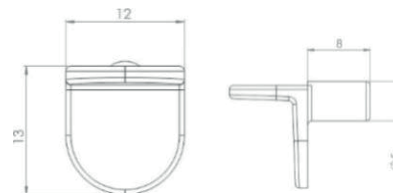
## METAL SHELF SUPPORT PIN

CODE	NAME	COLOUR	BOX	KG
3307	Metal Shelf Pin	Nickel	1000	2.5



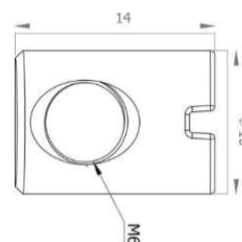
## 5 mm METAL SHELF SUPPORT PIN

CODE	NAME	COLOUR	BOX	KG
3308	5 mm Metal Shelf Pin	Nickel	1000	3



## CYLINDER PULLER NUT

CODE	NAME	COLOUR	BOX	KG
3309	M6 x Ø10 x 13 mm Cylinder Nut	Zinc	3000	15
3310	M6 x Ø10 x 14 mm Cylinder Nut	Zinc	3000	15



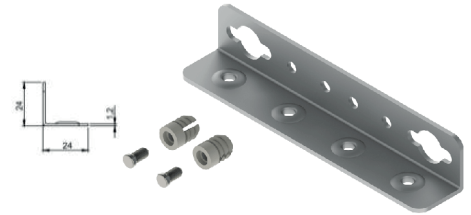
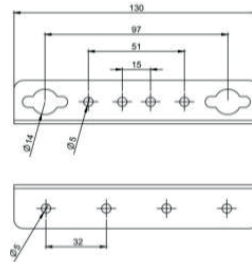
## KNOCK NUT

CODE	NAME	COLOUR	BOX	KG
3311	M10 Knock Nut	Zinc	500	15
3312	M8 Knock Nut	Zinc	500	15
3313	M6 Knock Nut	Zinc	500	15
3314	M5 Knock Nut	Zinc	500	15
3315	M4 Knock Nut	Zinc	500	15
3316	3/8 Knock Nut	Zinc	500	15
3317	5/16 Knock Nut	Zinc	500	15



## BED FITTING METAL SET WITH DOWEL

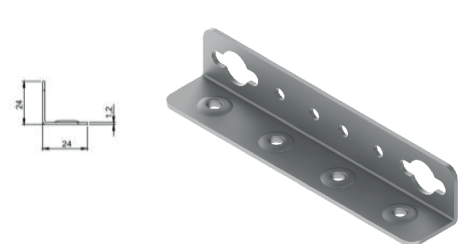
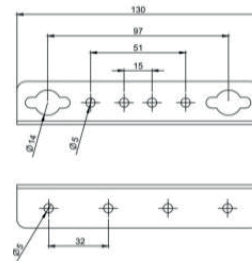
CODE	NAME	COLOUR	BOX	KG
3351	Pls. Dowel Bed Sheet 1.2 mm	Zinc	10 Set	2.6



Bed connection metal plate - 4pcs  
Bed connection screws - 8pcs  
M6 Q 10x13 plc. Dowel - 8pcs

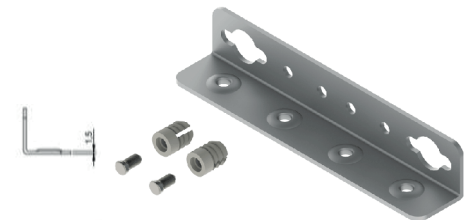
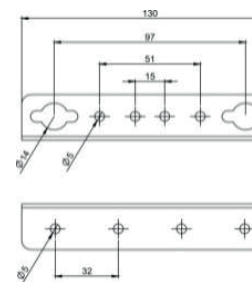
## BED FITTING PLATE (SINGLE METAL)

CODE	NAME	COLOUR	BOX	KG
3352	Bed Sheet (Single Sheet) 1.2 mm	Zinc	500	24



## BED FITTING METAL SET WITH DOWEL

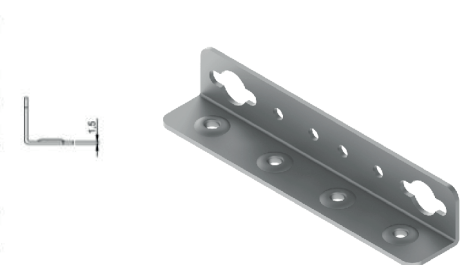
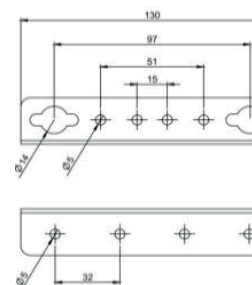
CODE	NAME	COLOUR	BOX	KG
3353	Pls. Dowel Bed Sheet 1.5 mm	Zinc	10 Set	3



Bed connection metal plate - 4pcs  
Bed connection screws - 8pcs  
M6 Q 10x13 plc. Dowel - 8pcs

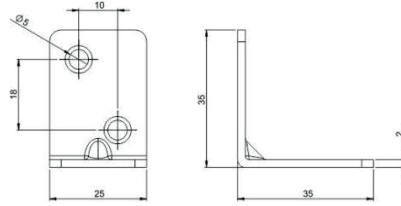
## BED FITTING PLATE (SINGLE METAL)

CODE	NAME	COLOUR	BOX	KG
3354	Bed Sheet (Single Sheet) 1.5 mm	Zinc	500	26



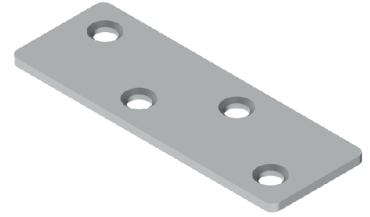
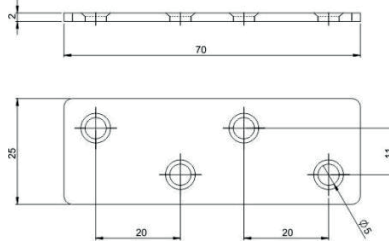
## L MITER

CODE	DIMENSIONS	COLOUR	BOX	KG
3401	2x25x35x35	Zinc	100	2.6



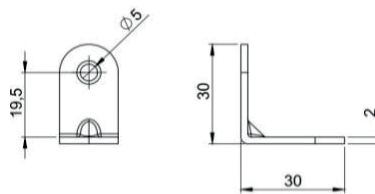
## FLAT MITER

CODE	DIMENSIONS	COLOUR	BOX	KG
3402	2x25x70	Zinc	100	2.6



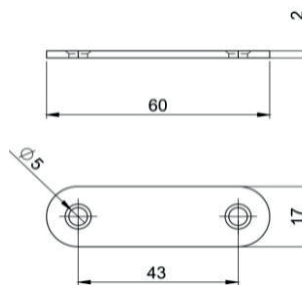
## L MITER

CODE	DIMENSIONS	COLOUR	BOX	KG
3403	2x17x30x30	Zinc	100	1.4



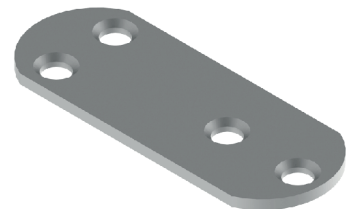
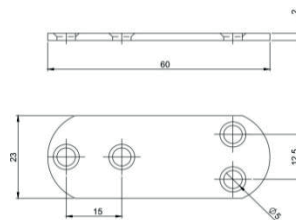
## FLAT MITER

CODE	DIMENSIONS	COLOUR	BOX	KG
3404	2x17x60	Zinc	100	1.4



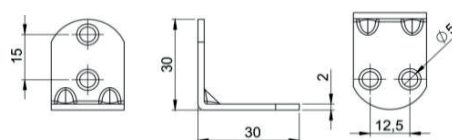
## FLAT MITER

CODE	DIMENSIONS	COLOUR	BOX	KG
3405	2x23x60	Zinc	100	2.3



## L MITER

CODE	DIMENSIONS	COLOUR	BOX	KG
3406	2x23x30x30	Zinc	100	2.3





**GLOBAL FIX**  
Furniture Accessories

Ortamahalle, İbrahimağa Cd. Emintaş 2 Sanayi Sitesi No: 20F 34040 Bayrampaşa, İstanbul / TÜRKİYE  
Tel: +90 212 672 02 08 Mobile: +90 531 991 54 56 E-mail: info@global-fix.com

[www.global-fix.com](http://www.global-fix.com)